
PFANKUCH Vakuum Shuttle Feeder

Model PSA 450-G

Automatic product separation and feeding into further production flows

Machine Concept

The technical well matured, servo motor driven machine concept of PFANKUCH shuttle feeder model PSA is field proven for automated separating and feeding of flat products like stitched and unstitched catalogues, magazines, booklets and books up to max. 20 mm thickness. This feeder model is especially suitable for processing products with high stiffness.

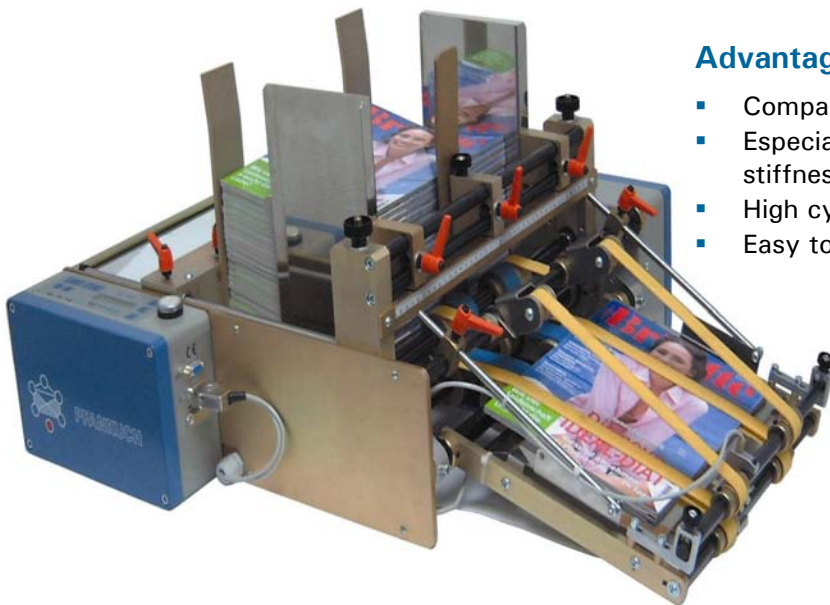
The feeder operates on a top load bottom feed principle and allows magazine stack heights up to 250 mm (depending on product specifications). An oscillating vacuum plate separates the lowest product damage-free from the magazine pile and pushes it through a height adjustable gate to a rotating eject pulley. A height adjustable kicker supports the product separation from the rear edge of the pile.

The separated product is guided through the horizontal delivery into a standby position for a photo optical misfeed control. Out of this position the cycled feeding process is initiated by an electronic start sensor. The product is directly ejected into the further production flow (e.g. collating line). The feeding speed is up to 110 products per minute (depending on product specifications).

All feeder functions are controlled by the touch panel of the PFANKUCH VS-2000 Dialog Processor. Peripheral functions are powered and guided by a compact control system.

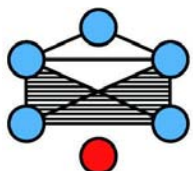
Technical Machine Design

- Variable height adjustability of product ejection gate (depending on product thickness)
- Variable speed adjustability from 1 to 110 cycles per minute (depending on product specifications)
- Microprocessor controlled and user friendly operating panel
- external start signal processing e.g. by light barrier, speed synchronisation by incremental encoder possible



Advantages at a Glance

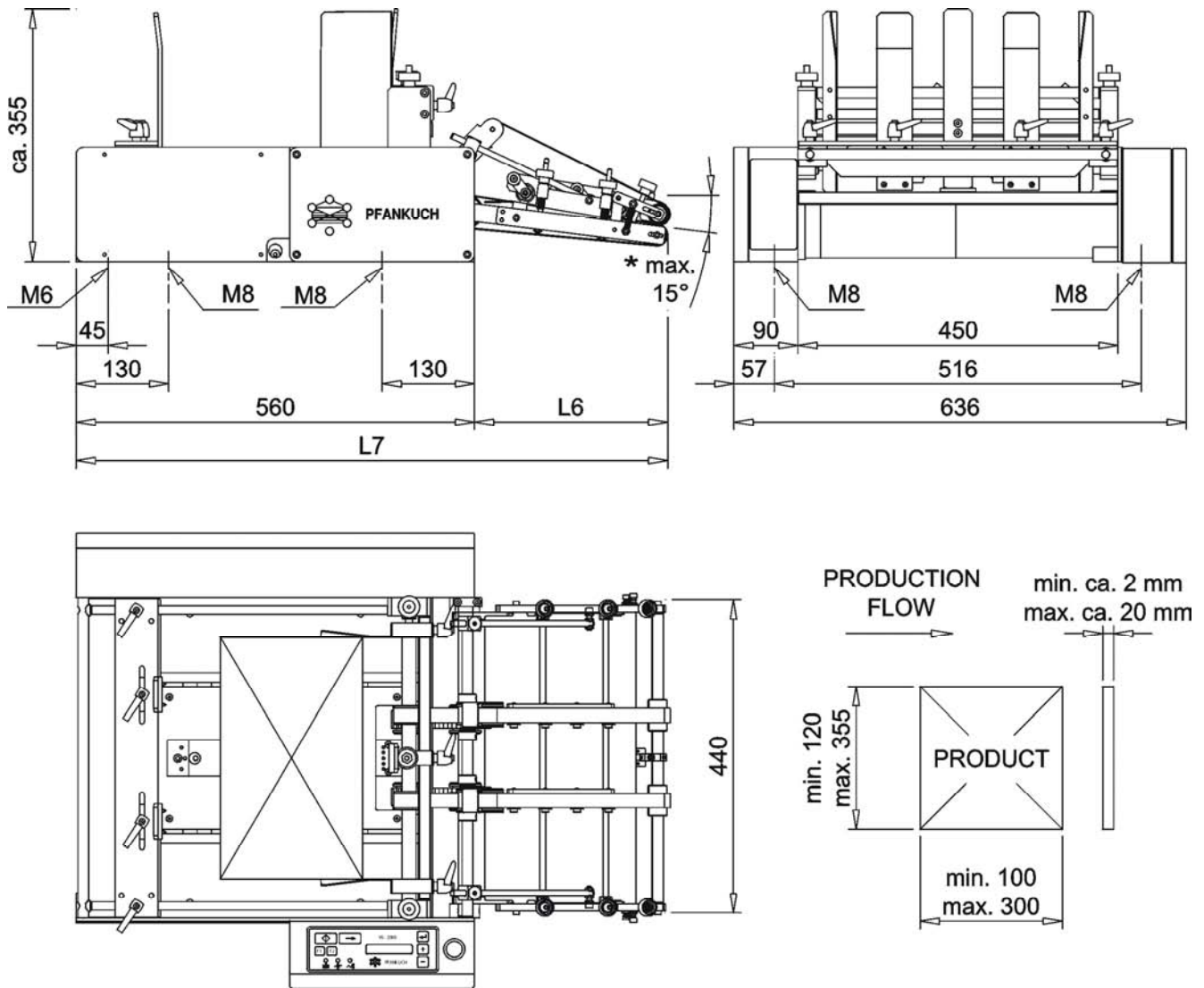
- Compact construction for heavy duty applications
- Especially suitable for processing products with high stiffness and thickness up to 20 mm
- High cycle speeds
- Easy to realize solutions for machine integration



PFANKUCH

PFANKUCH MASCHINEN GMBH
Kurt-Fischer-Str. 23b
D – 22926 Ahrensburg / Germany
Tel. +49 (0) 4102-47810
Fax +49 (0) 4102-478180
www.pfankuch.com
info@pfankuch.com

Technical Data

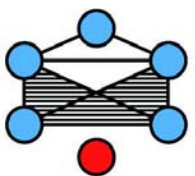


* Other angle of inclination possible on request

FEEDER	Speed (depending on product specs.)	Air Consumption	Weight (net Kg)
PSA 450	0 – 300 T/ min.	Integral Pump 15l/min.	51

HORIZONTAL DELIVERY	L6 [mm]	L7 [mm]
Model 150	270	830
Model 380	530	1090

Multi Voltage : 90 – 240 V, 50 – 60 Hz, 0,4 kW
 Drive : Servo Motor



PFANKUCH

PFANKUCH MASCHINEN GMBH
 Kurt-Fischer-Str. 23b
 D – 22926 Ahrensburg / Germany
 Tel. +49 (0) 4102-47810
 Fax +49 (0) 4102-478180
www.pfankuch.com
info@pfankuch.com